

[www.bentoproduct.ba](http://www.bentoproduct.ba)



# BENTOCARPET









# **BENTOPRODUCT**

## ABOUT US

BENTOPRODUCT Ltd. is a manufacturer of high-quality bentonite-based products. The HQ is placed in Banjaluka (Bosnia and Herzegovina), while the production plant is located in Sipovo (90 km southwest from Banjaluka). The bentonite mines with reserves of around 5 million tons, with the percentage of active mineral montmorillonite ranging from 70% to 95%, are in the immediate vicinity of production plant.

The installed capacity allows production of about 50 000 tons of various high-quality products. The current infrastructure and mine potential provide possibilities for significant capacity increase and investments into new production lines.

BENTOPRODUCT Ltd. operates in accordance with the Integrated Management System. We have implemented the following standards: ISO 9001:2015, ISO 14001:2015, ISO 45001:2018, HACCP, HALAL, KOSHER.





# **BENTOCARPET**

## DESCRIPTION

BENTOCARPET geosynthetic clay liner (GCL) is a multi-layered, waterproof barrier, manufactured from the equally distributed, high swelling sodium activated bentonite granules, placed between carefully selected non-woven and woven geotextiles which are mechanically bonded by special needle-punching method in order to achieve desirable shear resistance and good tensile strengths, and to maintain equal distribution of bentonite granules during manipulation, installation and exploitation of the membrane.

**High-quality geosynthetic  
bentonite mats for the construction  
of demanding hydraulic barriers**



# CERTIFICATE

BENTOCARPET was tested and certified by the Slovenian National Building and Civil Engineering Institute, after which we obtained the right to apply CE marking and issue the Declaration of Conformity in accordance with the EU standards regulating the application of bentonite mats (GCL).





# BENTOCARPET

## APPLICATION



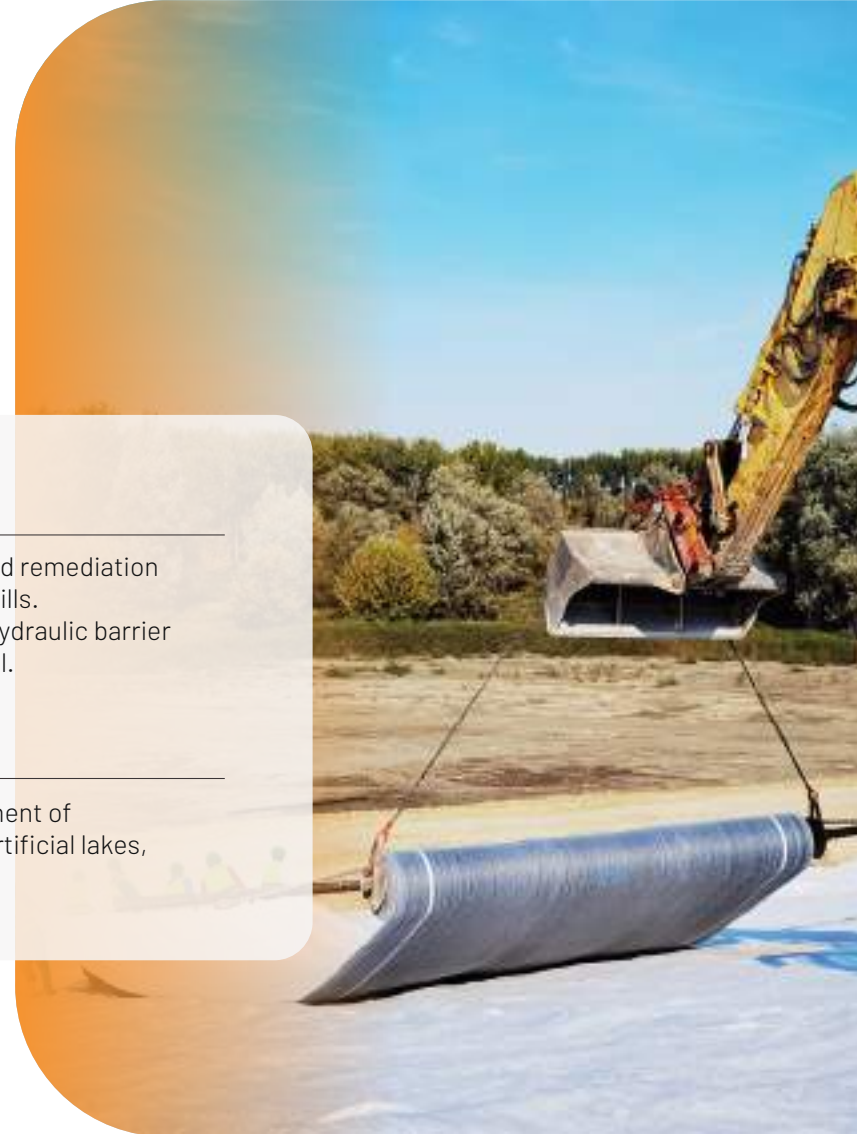
### 1. LANDFILLS

BENTOCARPET is an excellent choice for the construction and remediation of bottom and cover sealing layers for different types of landfills. Application of BENTOCARPET creates durable, self-healing hydraulic barrier that prevents fluids to go inside or outside the covered landfill.



### 2. HYDROTECHNICAL FACILITIES

BENTOCARPET is suitable for the construction and management of embankments, canals, river waterways, surface reservoirs, artificial lakes, ponds, swimming pools etc.







# BENTOCARPET

## APPLICATION



### 3. TRAFFIC INFRASTRUCTURE

BENTOCARPET is extremely suitable for the construction of roads and rail infrastructure, airport surfaces and similar areas for transport infrastructure. With its exceptional hydraulic and mechanical properties, BENTOCARPET prevents migration of fluids through embankments, protects their stability and effectively prevents contaminated fluids from entering the surrounding soil, including deeper soil layers, protecting thus groundwater from pollution.



### 4. SECONDARY CONTAINMENT SYSTEMS

BENTOCARPET is highly recommended for the construction and protection of chemical storages, various types of reservoirs (for fuel, oil and other hazardous waste), waste treatment/destruction facilities, liquid waste underground tanks, transshipment stations and similar, where BENTOCARPET is used as an effective secondary barrier that prevents the leakage of harmful substances and their uncontrolled penetration into surrounding soil and groundwater.





# BENTOCARPET

## TECHNICAL SUPPORT

BENTOPRODUCT provides its customers and partners with exceptional technical support. Our expert team is always available to customers and partners to provide additional information about product application in order to achieve the optimal results.

Our expert team organizes regular visits to the construction sites and acts promptly in case of emergency.

### TECHNICAL PRESENTATION OF THE PRODUCTS

All interested contractors, project design agencies or investors are welcome to ask for a commercial and technical presentation of our product portfolio with special emphasis on a specific application of each product.

For more information, please contact:  
**[aleksandar.slijepcevic@bentoproduct.ba](mailto:aleksandar.slijepcevic@bentoproduct.ba)**







# BENTOCARPET INSTALLATION

Installation of BENTOCARPET is quick and easy provided it is performed by highly skilled, well-equipped and experienced contractor.

The contractor is recommended to ask for detailed instructions (BENTOCARPET – Installation Guidelines) and technical support from the manufacturer. Installation guidelines offer detailed information on product, packaging, transport, unloading, storage, installation and exploitation of the product.

In order to make the installation easier, the woven and non-woven geotextiles are marked with longitudinal lines for overlapping areas. To seal the overlapping areas we provide bentonite microgranules BENTOPROSEAL-GCL in 25kg paper bags.





# **BENTOCARPET**

## **DELIVERY**

BENTOPRODUCT has developed an efficient and reliable system for order receipt and it offers well organized and on-time product delivery.

BENTOCARPET is delivered in a form of a roll covering around 200 m<sup>2</sup> with a weight of about 1 t per roll. Each roll is wrapped in LDPE foil with UV protection. Upon the customer's request, the roll may be equipped with a pair of slings with carrying capacity of 1t, for the safe handling.

For all information related to transport and delivery procedures, please contact our Sales Department which will guide you through a complete delivery process and make sure the ordered goods reach delivery location exactly as requested.





# BENTOPRODUCT

## QUALITY CONTROL

BENTOPRODUCT regularly applies a strict concept of quality control system based on five levels of control:

- 1) Raw materials quality control
- 2) Process control
- 3) Final product quality control
- 4) Product application quality control
- 5) External lab quality control

Modern equipped, well-organized laboratory and trained staff enable regular implementation of four-level control, while the fifth level refers to the results verification performed by external laboratories.

The Integrated Management System (IMS) policy of BENTOPRODUCT Ltd. has been based on maintenance and constant improvement of the following systems: ISO 9001:2015, ISO 14001:2015, ISO 45001:2018 and HACCP, KOSHER and HALAL.





# CONSTRUCTION



# PRODUCTS



## BENTOPROSEAL

Sodium-activated bentonite with high-yield and exceptional rheological and waterproofing properties, for special construction works



## BENTOCARPET

High quality geosynthetic membrane with bentonite core for waterproofing construction works

## BENTOCARPET V5

High-quality geosynthetic bentonite mats for the construction of demanding hydraulic barriers



## Ground PLUS

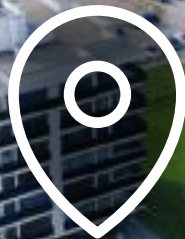
High-quality granulated bentonite for enhancement of electrical conductivity in the construction of grounding installations



Learn more: [www.bentoproduct.ba](http://www.bentoproduct.ba)







**BENTOPRODUCT Ltd.**  
SALES DEPARTMENT

📍 Bul. vojvode Stepe Stepanovića 181c  
78000 Banjaluka

☎ + 387 51 225 214  
✉ +387 51 225 212

✉ [contact@bentoproduct.ba](mailto:contact@bentoproduct.ba)