

[www.bentoproduct.ba](http://www.bentoproduct.ba)



# BENTOCARPET





i

BENTOCARPET geosynthetic clay liner (GCL) is a multi-layered waterproofing barrier with bentonite filling, manufactured from the equally distributed, high swelling, sodium activated bentonite granules, placed between carefully selected non-woven and woven geotextiles which are mechanically bonded in order to achieve desirable shear resistance, good tensile strength and to maintain evenly distributed bentonite granules during manipulation, installation and exploitation of the membrane.



**High quality geosynthetic liner with bentonite filler for the construction of demanding hydraulic barriers**





BENTOCARPET was tested and certified by the Slovenian National Building and Civil Engineering Institute, after which we obtained the right to apply CE marking and issue the Declaration of Conformity in accordance with the EU standards regulating the application of bentonite mats (GCL).

**ZAG**

**ZAVOD ZA  
GRADBENIŠTVO  
SLOVENIJE**

SLOVENIAN  
NATIONAL BUILDING  
AND CIVIL ENGINEERING  
INSTITUTE

Dimičeva ulica 12  
1000 Ljubljana  
Slovenija

info@zag.si  
www.zag.si

Notified certification body No. 1404

## **Certificate of conformity of the factory production control**

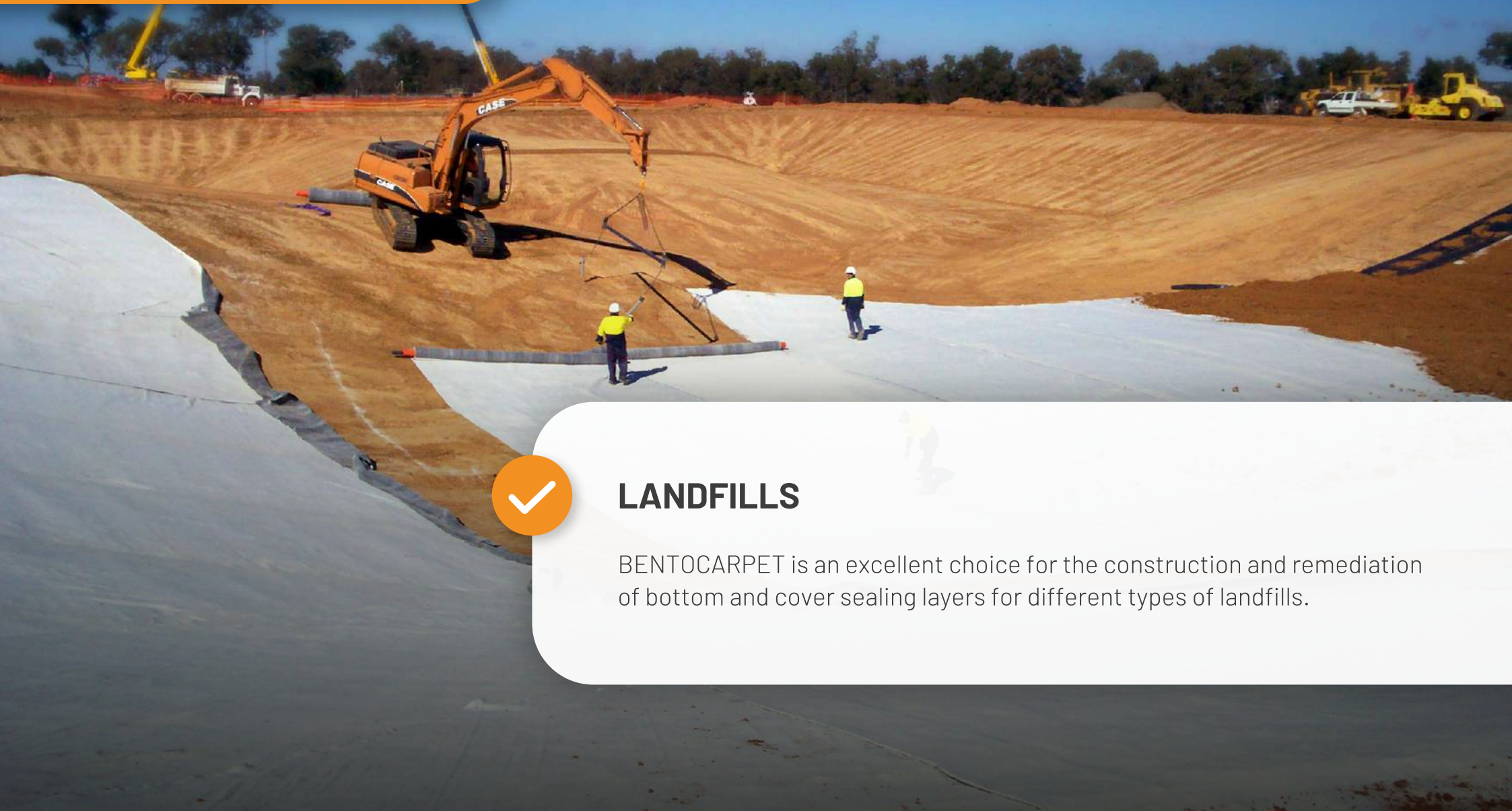
**1404 – CPR – 3056**

In compliance with Regulation (EU) No 305/2011 of the European Parliament and of the Council of 9 March 2011 (the Construction products Regulation or CPR), this certificate applies to the construction products

**geosynthetic barriers Bentocarpet**  
(type GBR-C)

**CE**  
09-01/19

# Application



## LANDFILLS

BENTOCARPET is an excellent choice for the construction and remediation of bottom and cover sealing layers for different types of landfills.

# Application



## TRAFIC INFRASTRUCTURE

BENTOCARPET is extremely suitable for the construction of road and rail infrastructure, airport surfaces and similar areas for transport infrastructure. With its exceptional hydraulic and mechanical properties, BENTOCARPET prevents migration of fluids through embankments, protects their stability and effectively prevents contaminated fluids from entering the surrounding soil, including deeper soil layers, protecting thus groundwater from pollution.



## HYDROTECHNICAL FACILITIES

BENTOCARPET is very suitable for the construction and management of embankments, canals, river waterways, surface reservoirs, artificial lakes, ponds, swimming pools etc.

**Application**

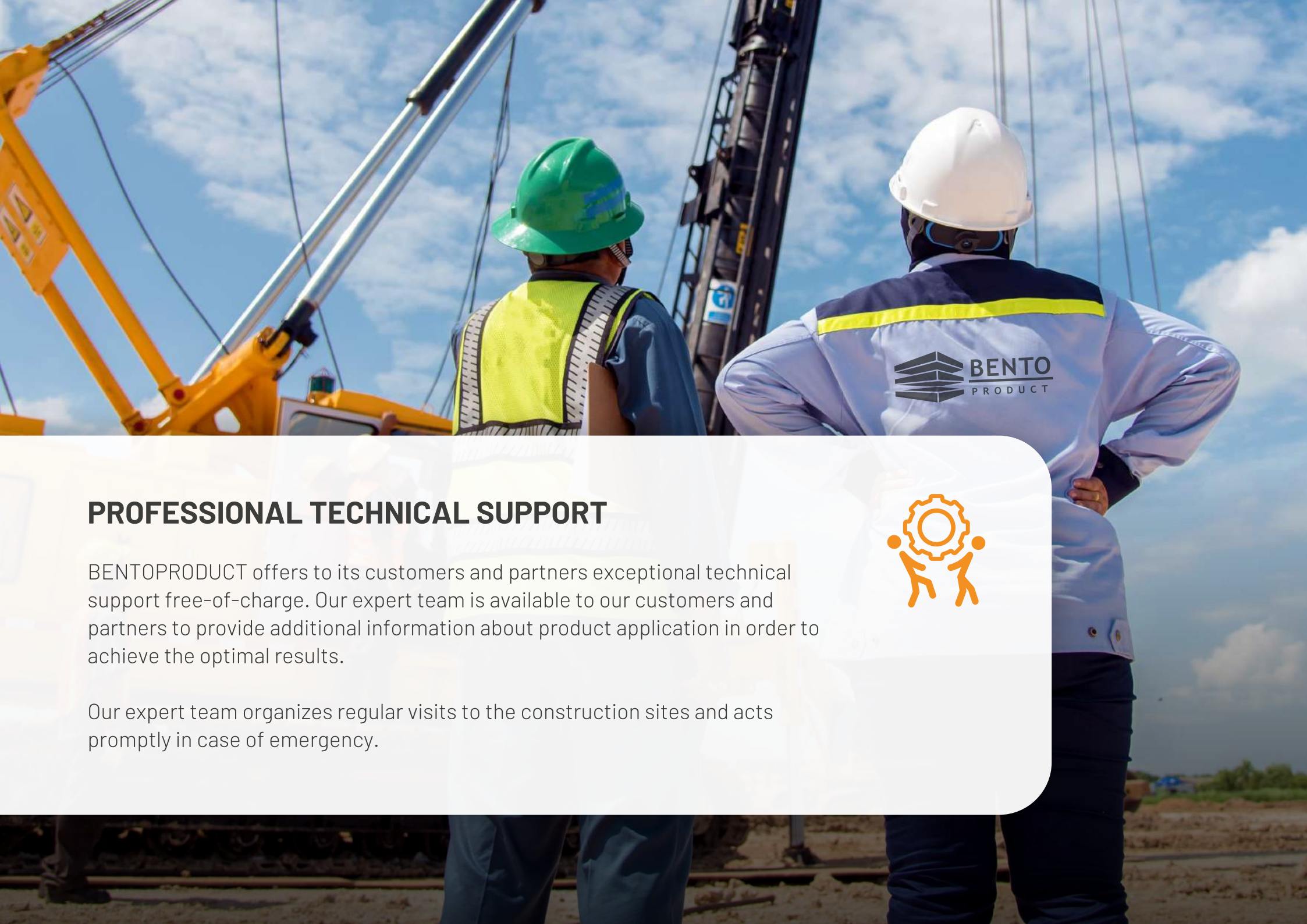


# Application



## SECONDARY CONTAINMENT SYSTEMS

BENTOCARPET is extremely suitable for the construction and protection of chemical storages, various types of tanks (for fuel, oil and other hazardous waste), waste treatment/destruction facilities, liquid waste underground tanks, transshipment stations and similar, where BENTOCARPET is used as an effective secondary barrier that prevents the leakage of harmful substances and their uncontrolled penetration into surrounding soil and groundwater.



## PROFESSIONAL TECHNICAL SUPPORT

BENTOPRODUCT offers to its customers and partners exceptional technical support free-of-charge. Our expert team is available to our customers and partners to provide additional information about product application in order to achieve the optimal results.

Our expert team organizes regular visits to the construction sites and acts promptly in case of emergency.



## ON-TIME DELIVERY

BENTOPRODUCT has developed an efficient and reliable system for order receipt and it offers its partners well organized and on-time delivery of requested products.





## QUALITY CONTROL

BENTOPRODUCT applies a strict five-level quality control system on regular basis. BENTOPRODUCT operates in accordance with the Integrated Management System that implies ISO 9001:2015, ISO 14001:2015 and OHSAS 18001:2007. For some programs we have also implemented HACCP, HALAL and KOSHER standards.





**BENTOPRODUCT Ltd.**  
**SALES DEPARTMENT**

📍 Bul. vojvode Stepe Stepanovica 181c  
78000 Banjaluka

☎ + 387 51 225 210

☎ +387 51 225 212

✉ [contact@bentoproduct.ba](mailto:contact@bentoproduct.ba)